



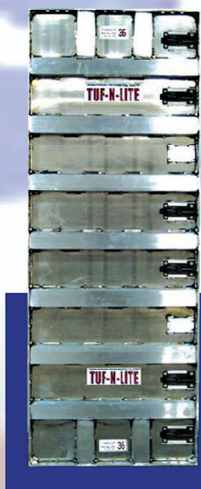
**Dealer Inquiries Welcome!**

**ALUMINUM FORMS**

**ALUMINUM FORM TIES**

**ALUMINUM FORM HARDWARE**

**BASEMENT WINDOW - SYSTEMS**



6 - 12 HOLE ALUMINUM FORM

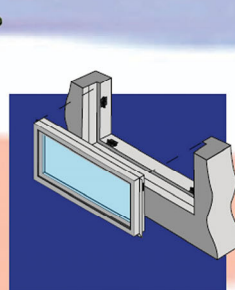


8000 LB. lbs.

ALUMINUM FORM TIE



ALUMINUM FORM HARDWARE



BASEMENT WINDOW - SYSTEMS



*Welcome to*



Thank you for considering the TUF-N-LITE® aluminum forming system. Our forms and accessory products were developed based on years of first-hand experience I have in the foundation business.

Whether you already own aluminum forms, or are just now considering your first set, please take time to review this catalog carefully.

This catalog shows additional products manufactured for the concrete contractor. Our manufacturing facility designs, stamps and produces the highest quality Aluminum Forms, Aluminum Form Ties, Aluminum Hardware/Accessories as well as a full Basement Window System.

*Remember, these products were developed by concrete contractors for concrete contractors.*

**2**



COMBO WALER BRACKET



WALER WITH PIN



CURVED PINS

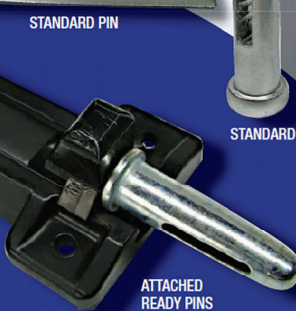
STANDARD PIN



STANDARD PIN



45° ANGLE CLIP



ATTACHED READY PINS



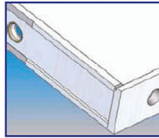


## ALUMINUM FORMS



### DURABLE FACE SHEET

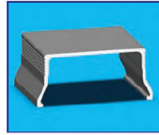
Extra durable face sheet is totally enclosed by the extruded end rails and side rails, substantially reducing sheet peeling.



DURABLE FACE SHEET

### RUGGED CROSS MEMBERS

Rugged cross members shed concrete, reducing weight gain while reinforcing the face material for flatter poured walls.



HORIZONTAL AND VERTICAL SUPPORT

### SIDE RAILS WITH COUNTER BORED STEEL BUSHINGS

Side rails feature redesigned bushings which distribute concrete load and extend bushing life.



SLIDE RAIL

### INNOVATIVE READY PIN HARDWARE

Optional Ready Pin attached hardware is durable, light-weight and increases labor productivity while reducing lost hardware expenses.

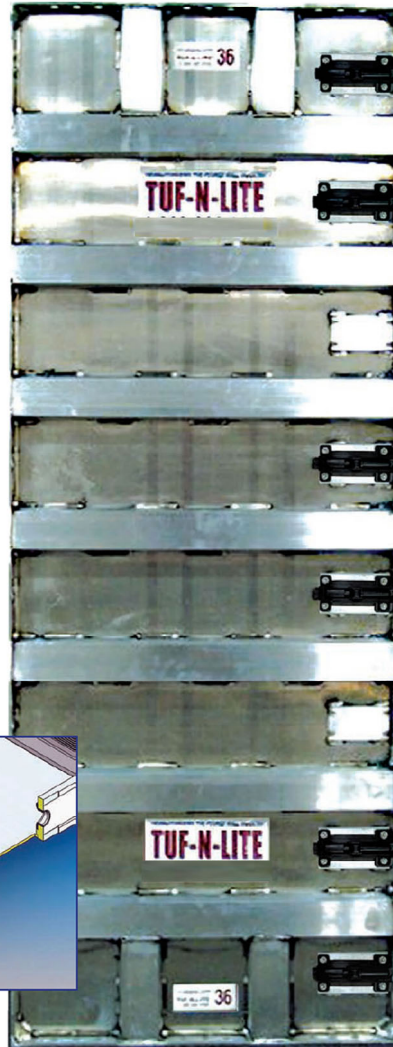
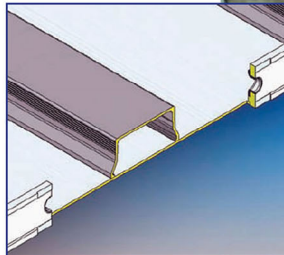


AVAILABLE ATTACHED HARDWARE

### READY PINS AVAILABLE ON ALL TYPES OF FORMS

Interchangeable with other aluminum forming systems.

- Tuf-N-Lite® forming systems are available in heights from 1' to 9'.
- 36" x 8' 6" -12 weighs 84 lbs.

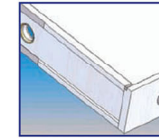


3 4

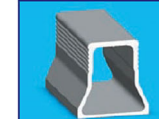


## ALUMINUM SMOOTH FORMS

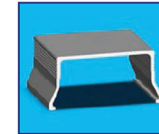
### 8 - 8 Hole Pattern



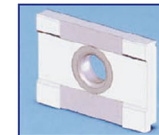
DURABLE FACE SHEET



HORIZONTAL SUPPORT



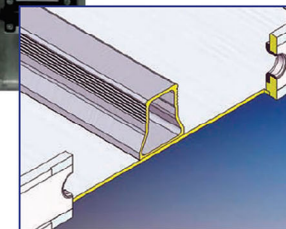
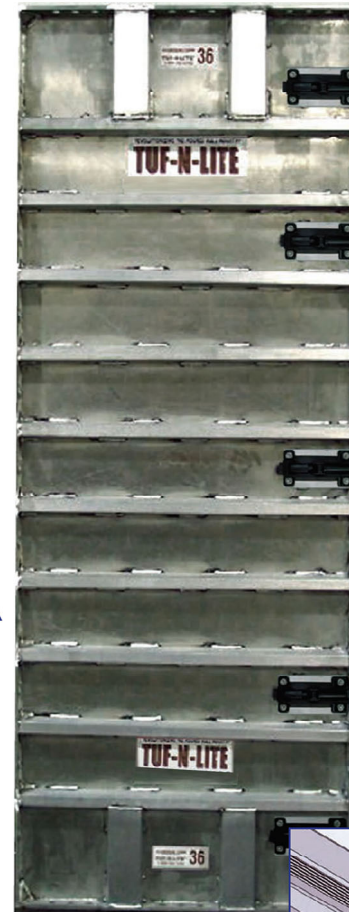
VERTICAL SUPPORT



SLIDE RAIL



AVAILABLE ATTACHED HARDWARE



### DURABLE FACE SHEET

Extra durable face sheet is totally enclosed by the extruded end rails and side rails, substantially reducing sheet peeling.

### RUGGED CROSS MEMBERS

Rugged cross members shed concrete, reducing weight gain while reinforcing the face material for flatter poured walls.

### SIDE RAILS WITH COUNTER BORED STEEL BUSHINGS

Side rails feature redesigned bushings which distribute concrete load and extend bushing life.

### INNOVATIVE READY PIN HARDWARE

Optional Ready Pin attached hardware is durable, light-weight and increases labor productivity while reducing lost hardware expenses.

### READY PINS AVAILABLE ON ALL TYPES OF FORMS

Interchangeable with other aluminum forming systems.

- Tuf-N-Lite® forming systems are available in heights from 1' to 9'.
- 36" x 8' 6" -12 weighs 84 lbs.



513-472-8400 • [www.TUFNLITE.com](http://www.TUFNLITE.com)



513-472-8400 • [www.TUFNLITE.com](http://www.TUFNLITE.com)



## ALUMINUM SYSTEM HARDWARE



### WALER BRACKETS

- Standard Steel Waler Bracket
- Used with dimensional lumber to align forms
  - Pin directly to forms
  - Packed 50 per box

### STEEL WALER WITH PIN

- Lightweight, yet durable
- Packed 50 per box

### BRICK LEDGE BRACKET

- Nail lumber to it to create a brick ledge form
- Pins to top of forms

### ALUMINUM CAP CLIPS

Optional Ready Pin attached hardware is durable, lightweight and increases labor productivity while reducing lost hardware expenses.

### STANDARD & CURVED WEDGES

- Hardened for many reuses
- Packed in buckets of 250
- Weight 26 lbs.
- Curved wedges

### STANDARD PIN

- Hardened steel pin
- Packed in buckets of 250
- Weight 53 lbs.



513-472-8400 • [www.TUFNLITE.com](http://www.TUFNLITE.com)



## ALUMINUM FORM TIES

# 8,000 lbs.

**TUF-N-LITE® is setting a standard for the industry.**

- We test every coil of USA made steel three times, the results must be no less than 8000 lbs.
- Steel Mill certification is required.
- Each tie has a serial number to track the tie back to a coil which has been mill certified.
- Every bundle of TUF-N-LITE® ties are clearly marked with our assurance of the 8000 lbs. pull test.
- This is our standard, and it should be the industry standard.

- Skids of ties from other suppliers (China) will not or may not have any markings of the pull strength or where it was made.
- It's estimated over 60% of the ties used in the USA come from China. You have NO ASSURANCE of the pull strength of those ties.
- Saving pennies with no protection or assurance of quality is dangerous at best - it's not worth the risk!
- Caution must be taken when using ties, because of the stress you place on a tie. TUF-N-LITE® has charts showing the calculated stress on ties.

Please take the time to review the Aluminum Form Wall Charts.

These charts show the calculated pressures placed on each tie once placed on the Aluminum Form at different heights

See page 7

**IMPORTED TIE Broke at 7146 lbs.**

**SAFETY CONCERNS**

## What does this number mean to you?

We start by using US Made Steel that has a traceable mill certification. Each tie is stamped with a serial number which allows us to track the steel from your tie back to the master coil, and mill that produced it. Each coil is tested for proper tensile strength (to 8000 lbs.), and bend

characteristics so you have a tie that breaks the way you want, and pulls the way you need it to.

The serial number on this tie assures you we have tested the coil in our plant, and you are getting the highest quality tie.



513-472-8400 • [www.TUFNLITE.com](http://www.TUFNLITE.com)



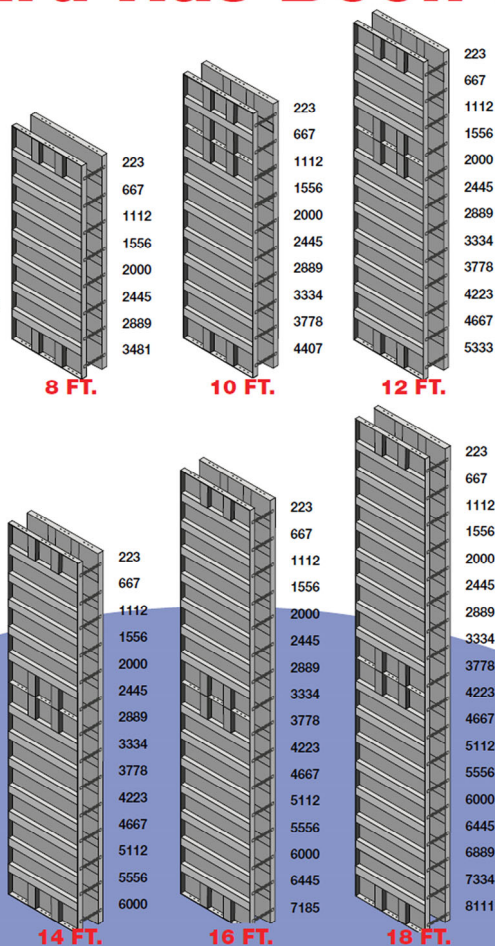
## INDEPENDENT TESTING RESULTS



### Safety Assurance

# A Standard Has Been Set!

## Aluminum Form Wall Heights



### PROTECT YOUR EMPLOYEES

- Protect your employees as well as your company by avoiding potential injuries from using cheaper ties NOT made in the USA.



513-472-8400 • [www.TUFNLITE.com](http://www.TUFNLITE.com)



## BASEMENT WINDOW - SYSTEMS

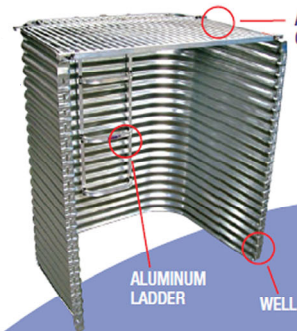
### Snap-In-Place Window Systems®

The TUF-N-LITE® Snap-In-Place window system offers advantages of a high quality vinyl window with ease of our patented snap in installation process. Aluminum pouring buck forms a window sill and an integrated retainer system that allows the window to securely snap into

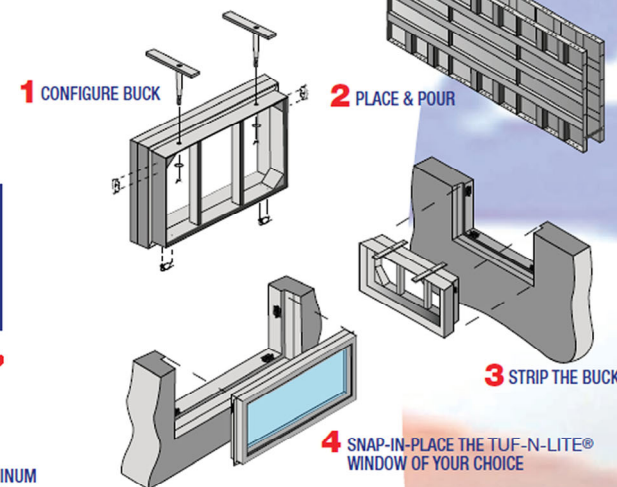
place. No drilling necessary and installation only takes seconds! Our quality windows are available in slider and hopper styles. Call us today to learn more about these innovative products.



### EGRESS WINDOW SYSTEM



Tuf-N-Lite® Easy to install window well system. Available with aluminum ladder and grate.



### SECURE Snap-In-Place TUF-N-LITE® Windows



513-472-8400 • [www.TUFNLITE.com](http://www.TUFNLITE.com)